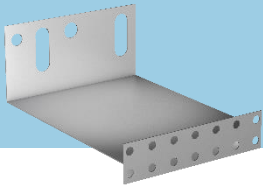


TECHNICAL DATA SHEET

30079

WDVSMART SOCKELSCHIENE ALU



AREA OF APPLICATION

WDVSmart Sockelschiene Alu is an all-purpose aluminium plinth profile shaped like a tray.

PROPERTIES

- High stability
- Standard cutting to size

COLOUR SHADE: aluminium

CONTAINER: 20 m/box

COVERAGE:

version	Coverage
63 mm / 2 m length	1 m/m
83 mm / 2 m length	1 m/m
103 mm / 2 m length	1 m/m
123 mm / 2 m length	1 m/m
143 mm / 2 m length	1 m/m
163 mm / 2 m length	1 m/m
183 mm / 2 m length	1 m/m

AREA OF APPLICATION

GENERAL RULES:

The substrate must be prepared and the coating work performed in accordance with the state of the art. All coatings and preliminary work should always be geared towards the project and the requirements it is exposed to. Please also observe the current BFS data sheets, published by the German Federal Committee for Paints and the Protection of Objects. Also see German construction contract procedures (VOB), Part C, DIN 18363, Paragraph 3 "Painting and coating work". Treating/removing layers of paint by sanding, welding, burning off, etc. can cause harmful dust and/or vapours. Only carry out work in well-ventilated areas. Use appropriate breathing apparatus/protective equipment, if necessary. All substrates must be clean, dry, load-bearing, and free from release agents. Substrates must be checked in terms of their load-bearing capacity and

suitability for subsequent coatings. If necessary, create a test surface and test the adhesion.

SUBSTRATE

Use anchors that are suitable for the substrate. If unevenness is not levelled sufficiently, the track will be at risk of stress and deformation, making flush application of the insulants difficult.

SUBSTRATE PREPARATION:

As appropriate for the substrate. Check the existing substrate for cavities and check its load bearing capacity. Remove coarse mortar burr. Unevenness can be levelled with the corresponding packing shim. As soon as the quantity of packing shims starts to affect the stability of the fixing, a levelling coat must be applied prior to installation. Significant unevenness can be levelled with suitable mortar (e.g. WDVSMART K+A UniMörtel, WDVSMART K+A Mörtel Weiss).

APPLICATION

A drill bit with a \varnothing of 8 mm is required for the hammer-in anchors that need to be used. The projection of the starter track should be taken into account according to the insulant thickness. For easier application, the projections are always slightly larger than the insulant thickness (e.g. 103 mm projection for 100 mm insulant). Board joints should be offset. For neat application of the insulation boards, the starter track must be installed even, level, and horizontal. The starter tracks are joined using starter track connectors (available in single units or lengths for cutting to size, as required).

APPLICATION NOTES:

Ensure compliance with applicable legislation and directives (e.g. building regulations, EneV, etc.), BFS data sheet no.

21, information from the Fachverband Wärmedämmverbundsystem in Germany, and the relevant EWIS system approval, as well as the technical approval for the anchors. Other directives must also be followed, e.g. BFS data sheet no. 19 and the following, as well as other applicable arrangements for plastering work.

SPECIAL INFORMATION

Check the anchorage is present and correct and fit a new anchor at an appropriate distance if necessary.

STORAGE

Store in a level position in dry conditions.

DISPOSAL

Ensure compliance with applicable legal directives governing normal construction waste.

TECHNICAL CONSULTATION

Please contact our technical customer service team (06324-709-0) if you have any questions that have not been answered in this Technical Data Sheet or relate to a specific project. We would be happy to provide further assistance.

DISCLAIMER

We are committed to taking the utmost care. However, we are only able to provide general information based on our own experiences, developments, and investigations, and these naturally cannot take the individual conditions of a project (substrates, weather conditions, other conditions) into account. The applicator is therefore obliged to maintain their knowledge in accordance with the state of the art and act responsibly. Our employees are available to provide specific advice and will be happy to do so.

We accept no responsibility for the use of the product in combination with other products.

The data provided in this Technical Data Sheet does not constitute binding information or liability.

Furthermore, suspension or the appearance of a subsequent edition will invalidate this Technical Data Sheet; information about this can be accessed at any time on our website: www.suedwest.de.

STATUS: 2026/MAY/RE